

# **SAP Product Road Map**

## **SAP BusinessObjects Semantic Layer**

Road Map Revision: Dec 4, 2012



# Legal disclaimer

---

The information in this presentation is confidential and proprietary to SAP and may not be disclosed without the permission of SAP. This presentation is not subject to your license agreement or any other service or subscription agreement with SAP. SAP has no obligation to pursue any course of business outlined in this document or any related presentation, or to develop or release any functionality mentioned therein. This document, or any related presentation and SAP's strategy and possible future developments, products and or platforms directions and functionality are all subject to change and may be changed by SAP at any time for any reason without notice. The information in this document is not a commitment, promise or legal obligation to deliver any material, code or functionality. This document is provided without a warranty of any kind, either express or implied, including but not limited to, the implied warranties of merchantability, fitness for a particular purpose, or non-infringement. This document is for informational purposes and may not be incorporated into a contract. SAP assumes no responsibility for errors or omissions in this document, except if such damages were caused by SAP's willful misconduct or gross negligence.

All forward-looking statements are subject to various risks and uncertainties that could cause actual results to differ materially from expectations. Readers are cautioned not to place undue reliance on these forward-looking statements, which speak only as of their dates, and they should not be relied upon in making purchasing decisions.

# Introduction to product road maps

---

## Purpose

Product road maps are designed to support the product adoption planning activities of SAP customers. A product road map helps a customer match short term and long term goals with technology plans.

A product road map describes how the feature / function capabilities in an SAP product or technology are planned to progress over time, in general:

- Today = changes in the current release version
- Planned Innovations = changes planned in upcoming development releases (next 12-18 months)
- Future Direction = proposed themes for a product or technology beyond the planned releases

The product road maps are targeted for use by IT planners, enterprise architects, SAP Consulting, and SAP consulting partners.

## Complementary resources

For a more general description of the business problems / processes being solved and supported by SAP, refer to Solution Road maps.

For more detailed technical information please refer to the Product Availability Matrix, Ramp-up Knowledge Transfer materials and product documentation.

# Table of contents

---

## Product Overview

- Product description
- Key trends and customer needs
- Road map overview and major product updates

## Product Road Map

- Today
- Planned
- Future

## Appendix



# Product Overview

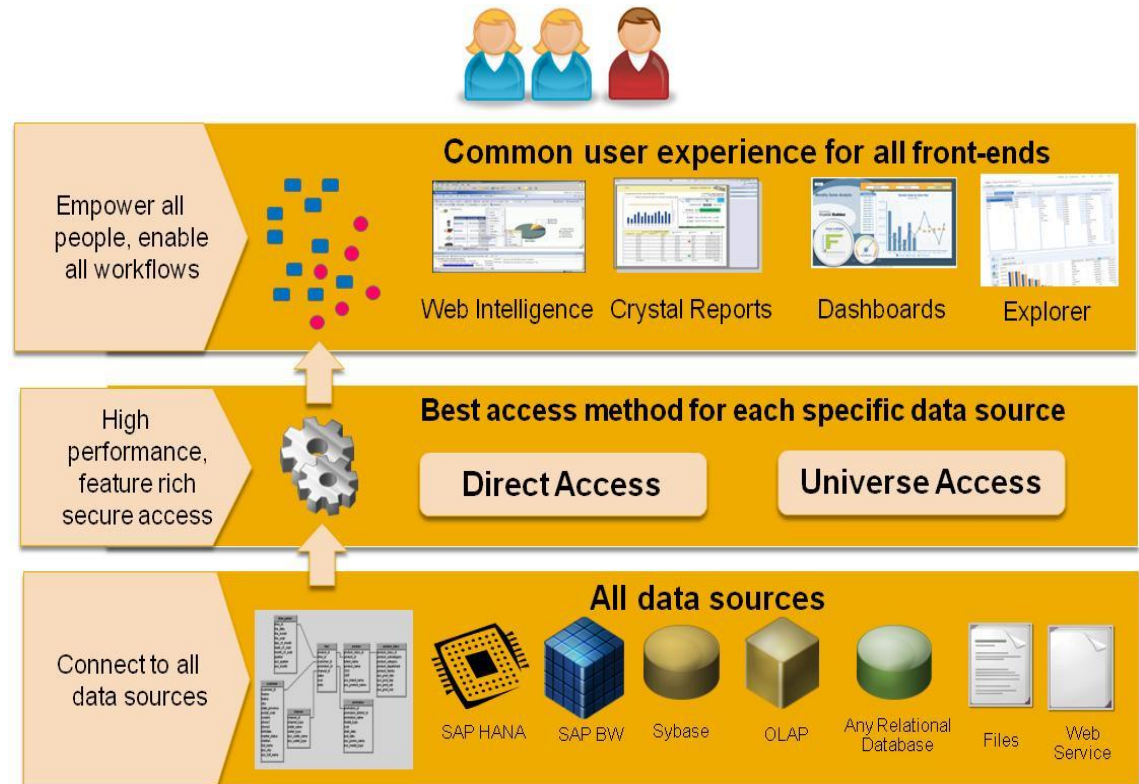
- Product description
- Key trends and customer needs
- Road map overview and major product updates

# Universe semantic layer

Exposing all business data under a single umbrella

## New universe semantic layer

- Consistent business user experience
- Trusted access to information
- Common access to all major data sources
- Hierarchical queries and reports
- Federated multi-source access



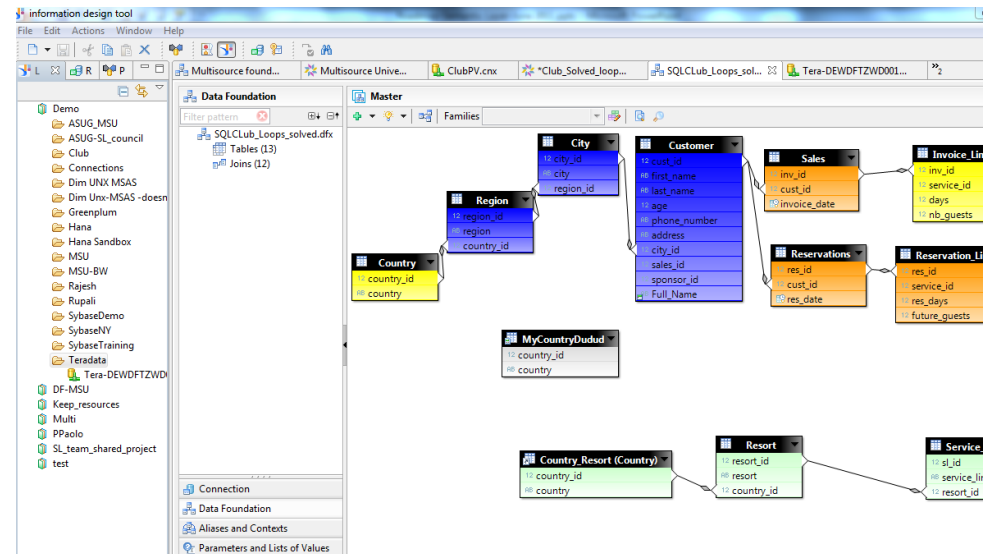


# Information Design Tool

A new authoring tool for building the universe semantic layer

## Information Design Tool

- Single development environment for building universes against relational, dimensional and multi-source data sources
- Clear separation between data foundation and business layer
- Share the work in a team of designers
- Manage security in a new interface
- Preview data results as you develop your project



# Dimensional access

## Query and report on hierarchical data

### Access OLAP data retaining the dimensional functionality

- Build universes on top of OLAP sources
- Member selection at query time
- Display data in hierarchical format with fold/unfold
- Extended formula library to include multi-dimensional functions

The top screenshot shows the 'Query Panel Dialog' with the following configuration:

- Classes And Objects:** Date.Day of Month, Date.Day of Week, Date.Day of Year, Fiscal, Date.Month of Year, Date.Week of Year, Delivery Date, Calendar, Delivery Date.Calendar, Delivery Date.Calendar Quart, Delivery Date.Calendar Seme, Delivery Date.Date, Delivery Date.Day Name, Delivery Date.Day of Month, Delivery Date.Day of Week.
- Result Objects:** Customer Geography, Delivery Date.Calendar, Internet Sales Amount.
- Members:** [France].SELF, [United States].SELF, [France].CHILDREN, [United States].CHILDREN.

The bottom screenshot shows the same dialog with the 'Result Set' table displayed:

Customer Geography	Date.Calendar	Internet Sales Amount	Internet Order Quantity
France	CY 2001	\$180,571.69	59
	H2 CY 2001	\$180,571.69	59
	CY 2002	\$514,942.01	233
	H1 CY 2002	\$233,673.62	82
Charente-Maritime	H2 CY 2002	\$281,268.39	151
	CY 2001	\$3,578.27	1
	H2 CY 2001	\$3,578.27	1
	CY 2002	\$4,252.98	2
Essonne	H2 CY 2002	\$4,252.98	2
	CY 2001	\$25,568.71	8
	H2 CY 2001	\$25,568.71	8
	CY 2002	\$55,175.64	24
Garonne (Haute)	H1 CY 2002	\$26,064.53	9
	H2 CY 2002	\$29,111.12	15
	CY 2001	\$7,156.54	2

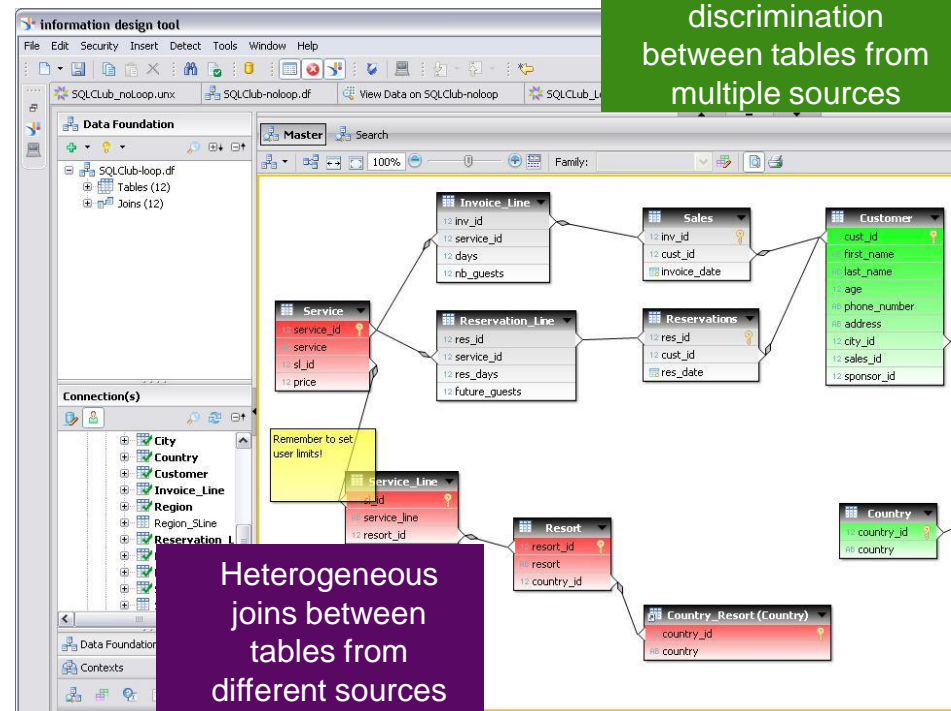


# Multi-source access

Single environment for accessing multiple data sources

## Multi-source universes

- Create universes on top of multiple relational data connections
- Federate data in real time and expose to business users
- Fine tune the optimization algorithms to boost performance and retrieve the least quantity of data from each data source
- Federation design integrated in the Information Design Tool



# Direct access to BEx queries

Connect directly to your source without creating a universe

## Direct access

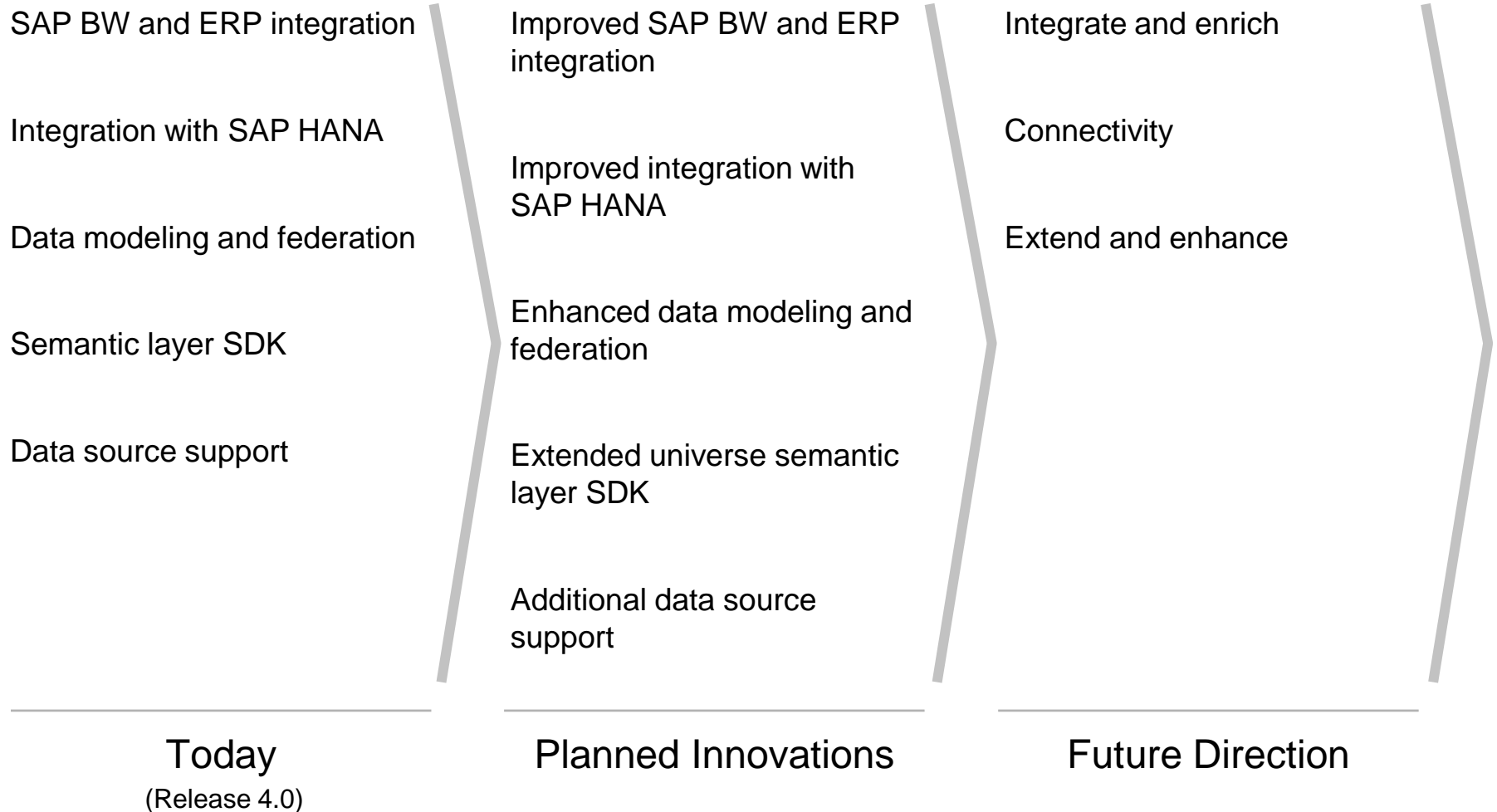
- No need to create a universe
- See data sources in business terms directly from client tools
- Dimensionally enabled: support of hierarchies and dimensional metadata in query panel and report

The screenshot displays the SAP BEx Query Designer interface. The 'Universe outline' on the left shows a hierarchy of data sources: 'BOL00 simple hierarchy' containing 'Sold to party', 'Material', 'Sales Volume (MC)', 'Sales Volume EUR', 'Sales Volume EUR Currency', and 'Sales Volume EUR Formatted Value'. The 'Result Objects' pane shows 'Product Hierarchy for material MARA'. A 'Member Selector' dialog is open, showing a tree structure with 'Machines' selected. The 'Available Objects' pane at the bottom lists 'New Document', 'Product Hierarchy for material MARA', 'Sales Volume EUR', and 'Variables'. The 'Report 1' window shows a table with the following data:

Product Hier.	Sales Volume EUR
Machines	122,455,097.73
Vehicles	111,090,810.25
Motorcyc	111,011,232.77
Cars	79,577.48
Hardware	163,570,134.31
PC	163,570,134.31

# SAP BusinessObjects Semantic Layer

## Product road map overview - key themes and capabilities



\* Up to 4.0 SP4, including FP3

This is the current state of planning and may be changed by SAP at any time.

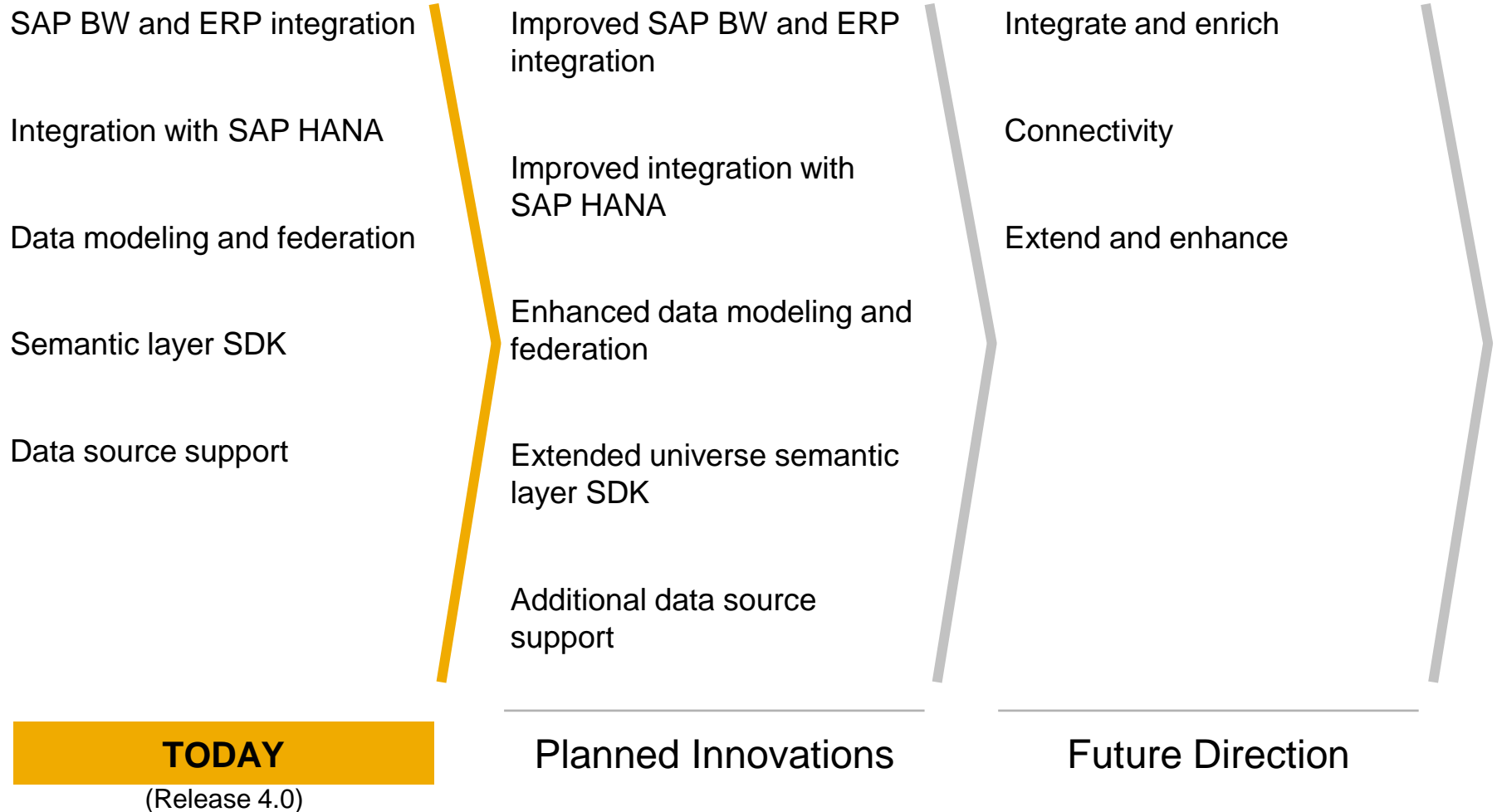


# Product Road Map

- Today
- Planned
- Future

# SAP BusinessObjects Semantic Layer

## Product road map overview - key themes and capabilities



\* Up to 4.0 SP4, including FP3

This is the current state of planning and may be changed by SAP at any time.

# SAP BusinessObjects Semantic Layer 4.0

## Semantic layer

---

### **SAP NetWeaver BW and SAP ERP integration**

- Access new metadata in BW
- Faster queries with Query Stripping
- Access SAP ERP info sets, ABAP queries and SAP queries

### **Integration with SAP HANA**

- Relational multisource universes on SAP HANA
- Access HANA dimensional models through SQL

### **Data modeling and federation**

- New federation designer in the Information Design Tool

### **Semantic layer SDK**

- Universe semantic layer authoring SDK

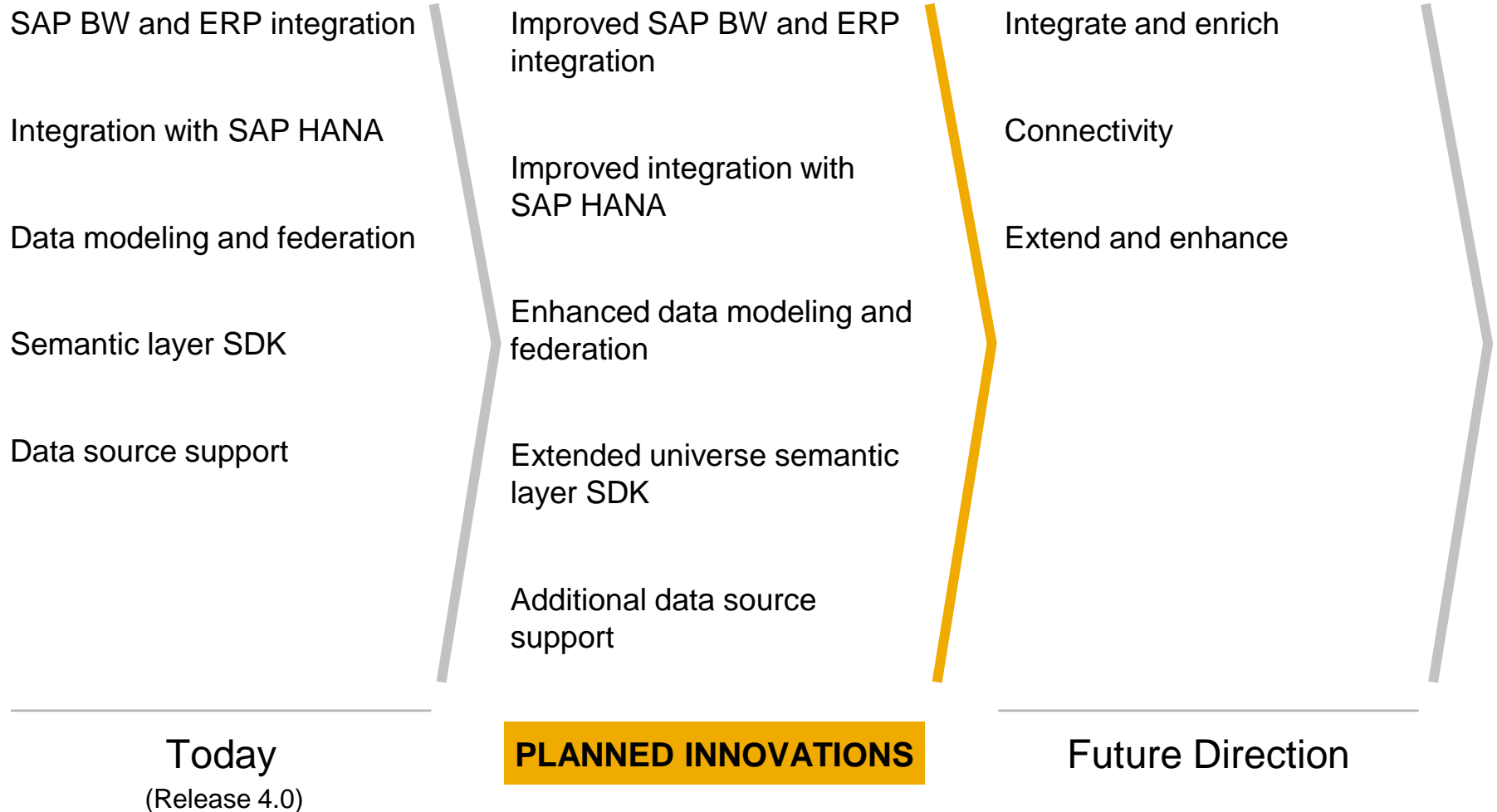
### **Data source support**

- Support matrix has been refreshed
- Microsoft Analysis Services (MSAS) and Essbase 11 support
- Hadoop support

**TODAY**

# SAP BusinessObjects Semantic Layer

## Product road map overview - key themes and capabilities



\* Up to 4.0 SP4, including FP3

This is the current state of planning and may be changed by SAP at any time.



# Planned innovations

## Improvements

---

### **Improved SAP BW and ERP integration**

- Access new metadata in BW
- BEx query direct access optimizations

### **Improved integration with SAP HANA**

- Direct access to HANA models
- Automatic creation of universes from HANA models
- HANA access performance optimization

### **Enhanced data modeling and federation**

- Federation designer in the Information Design Tool (target tables)
  - Enable complex mapping rules
  - Ability to work on a multisource project top down (design target data foundation then plug in real sources)

### **Extended universe semantic layer SDK**

- Universe semantic layer authoring SDK enhancements
- Manage universe related security
- Consume semantic layer via web services

### **Additional data source support**

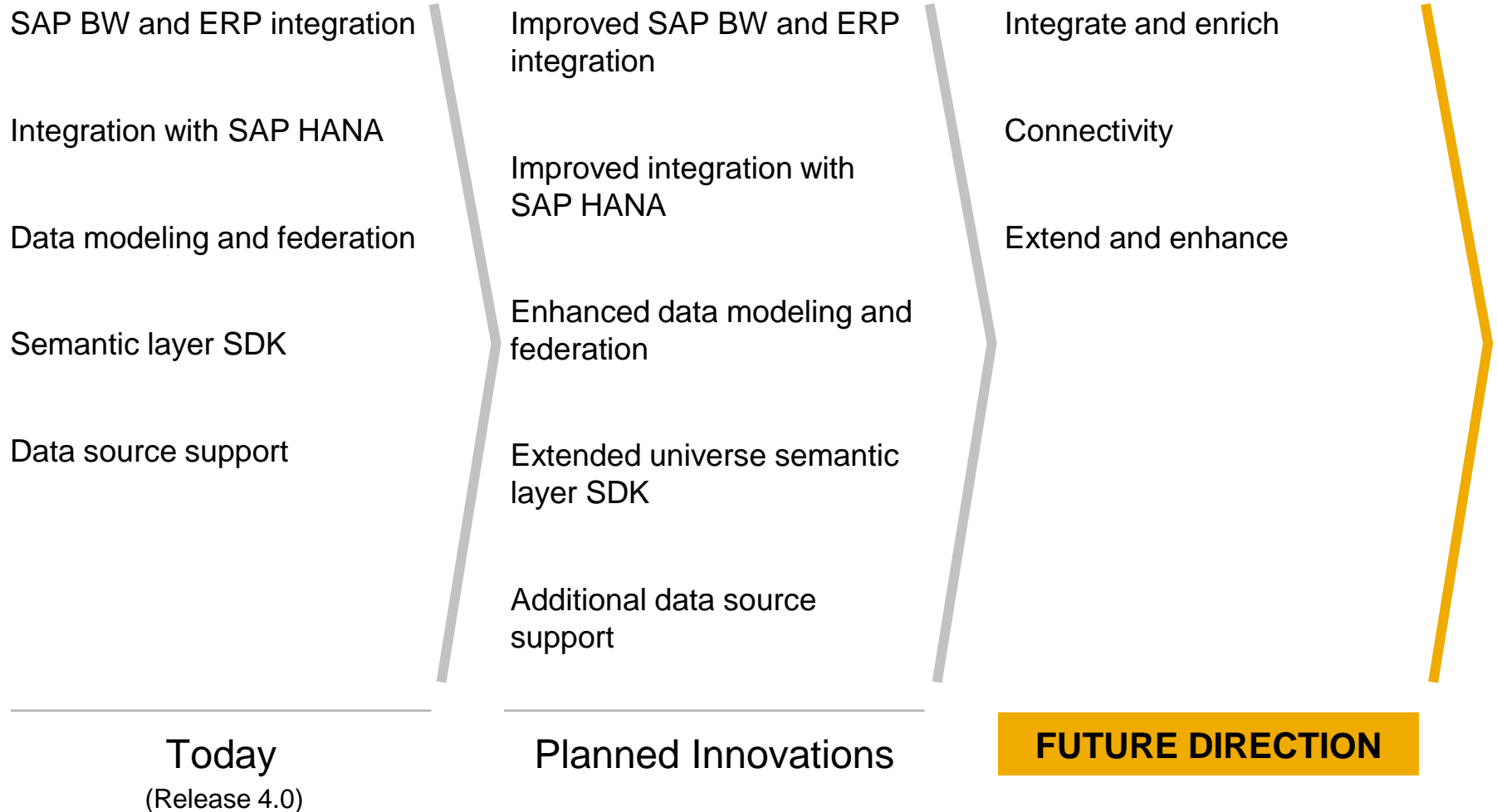
- Refresh the support matrix
- Support OData to access SAP applications

## PLANNED INNOVATIONS

This is the current state of planning and may be changed by SAP at any time.

# SAP BusinessObjects Semantic Layer

## Product road map overview - key themes and capabilities



\* Up to 4.0 SP4, including FP3

This is the current state of planning and may be changed by SAP at any time.

# SAP BusinessObjects Semantic Layer

## Future direction

---

### **Integrate and enrich**

- Integrate the design of universes and SAP HANA models in a single experience
- Enrich universe semantic layer to match geospatial and time metadata exposed in Explorer and Visual Intelligence

### **Connectivity**

- Open the universe semantic layer consumption to third party applications
- Connect to social, 'big' and web based data

### **Extend and enhance**

- Multi-source universes combining relational and dimensional data
- Enhance direct connectivity to self-descriptive data sources

## FUTURE DIRECTION

This is the current state of planning and may be changed by SAP at any time.



# Thank you

## **Road map contacts for customers and partners**

- Frank Prabel

F.prabel@sap.com

Road map owner

# Key links for more information

For customers and partners

---

## Key links

- Road maps on SAP Service Marketplace <http://service.sap.com/roadmap>
- SAP Community Network <http://www.scn.sap.com/>
- IT Planning Resources <https://websmp206.sap-ag.de/~sapidb/011000358700001160122012E>

## Where to go to provide product feedback and ideas

- SAP Idea Place <https://ideas.sap.com>
- Influence programs <http://service.sap.com/influence>
- SAP User Groups <http://www.sapusergroups.com/>

# © 2012 SAP AG. All rights reserved.

No part of this publication may be reproduced or transmitted in any form or for any purpose without the express permission of SAP AG. The information contained herein may be changed without prior notice.

Some software products marketed by SAP AG and its distributors contain proprietary software components of other software vendors.

Microsoft, Windows, Excel, Outlook, PowerPoint, Silverlight, and Visual Studio are registered trademarks of Microsoft Corporation.

IBM, DB2, DB2 Universal Database, System i, System i5, System p, System p5, System x, System z, System z10, z10, z/VM, z/OS, OS/390, zEnterprise, PowerVM, Power Architecture, Power Systems, POWER7, POWER6+, POWER6, POWER, PowerHA, pureScale, PowerPC, BladeCenter, System Storage, Storwize, XIV, GPFS, HACMP, RETAIN, DB2 Connect, RACF, Redbooks, OS/2, AIX, Intelligent Miner, WebSphere, Tivoli, Informix, and Smarter Planet are trademarks or registered trademarks of IBM Corporation.

Linux is the registered trademark of Linus Torvalds in the United States and other countries.

Adobe, the Adobe logo, Acrobat, PostScript, and Reader are trademarks or registered trademarks of Adobe Systems Incorporated in the United States and other countries.

Oracle and Java are registered trademarks of Oracle and its affiliates.

UNIX, X/Open, OSF/1, and Motif are registered trademarks of the Open Group.

Citrix, ICA, Program Neighborhood, MetaFrame, WinFrame, VideoFrame, and MultiWin are trademarks or registered trademarks of Citrix Systems Inc.

HTML, XML, XHTML, and W3C are trademarks or registered trademarks of W3C®, World Wide Web Consortium, Massachusetts Institute of Technology.

Apple, App Store, iBooks, iPad, iPhone, iPhoto, iPod, iTunes, Multi-Touch, Objective-C, Retina, Safari, Siri, and Xcode are trademarks or registered trademarks of Apple Inc.

IOS is a registered trademark of Cisco Systems Inc.

RIM, BlackBerry, BBM, BlackBerry Curve, BlackBerry Bold, BlackBerry Pearl, BlackBerry Torch, BlackBerry Storm, BlackBerry Storm2, BlackBerry PlayBook, and BlackBerry App World are trademarks or registered trademarks of Research In Motion Limited.

Google App Engine, Google Apps, Google Checkout, Google Data API, Google Maps, Google Mobile Ads, Google Mobile Updater, Google Mobile, Google Store, Google Sync, Google Updater, Google Voice, Google Mail, Gmail, YouTube, Dalvik and Android are trademarks or registered trademarks of Google Inc.

INTERMEC is a registered trademark of Intermec Technologies Corporation.

Wi-Fi is a registered trademark of Wi-Fi Alliance.

Bluetooth is a registered trademark of Bluetooth SIG Inc.

Motorola is a registered trademark of Motorola Trademark Holdings LLC.

Computop is a registered trademark of Computop Wirtschaftsinformatik GmbH.

SAP, R/3, SAP NetWeaver, Duet, PartnerEdge, ByDesign, SAP BusinessObjects Explorer, StreamWork, SAP HANA, and other SAP products and services mentioned herein as well as their respective logos are trademarks or registered trademarks of SAP AG in Germany and other countries.

Business Objects and the Business Objects logo, BusinessObjects, Crystal Reports, Crystal Decisions, Web Intelligence, Xcelsius, and other Business Objects products and services mentioned herein as well as their respective logos are trademarks or registered trademarks of Business Objects Software Ltd. Business Objects is an SAP company.

Sybase and Adaptive Server, iAnywhere, Sybase 365, SQL Anywhere, and other Sybase products and services mentioned herein as well as their respective logos are trademarks or registered trademarks of Sybase Inc. Sybase is an SAP company.

Crossgate, m@gic EDDY, B2B 360°, and B2B 360° Services are registered trademarks of Crossgate AG in Germany and other countries. Crossgate is an SAP company.

All other product and service names mentioned are the trademarks of their respective companies. Data contained in this document serves informational purposes only. National product specifications may vary.

The information in this document is proprietary to SAP. No part of this document may be reproduced, copied, or transmitted in any form or for any purpose without the express prior written permission of SAP AG.